



# BibTag Beeper Replacement guide

Step-by-step guide



## **Why you should check and replace your beeper**

**Sometimes the beeper doesn't work properly after using your decoder for a while. Usually due to the (changing) weather conditions. This issue is often a small one but can be a pity. A non-beeping decoder doesn't indicate a non-detecting decoder,**

**but for athletes crossing your line it might be confusing. The beeper is a confirmation for many to know their tag is being detected. So, how do you solve this issue?**

## **Contents**

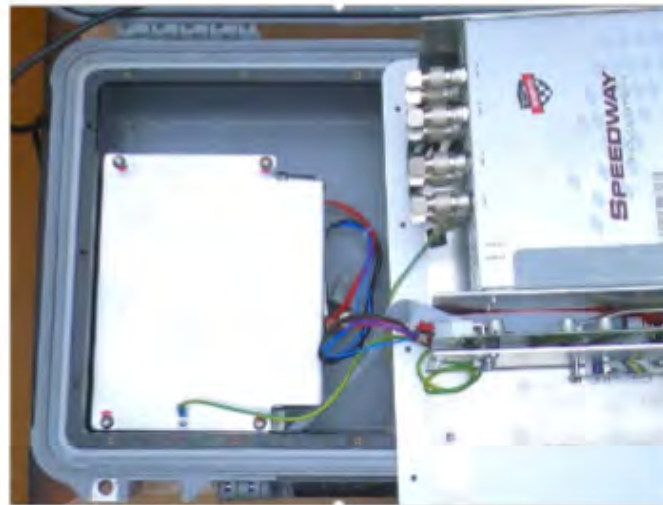
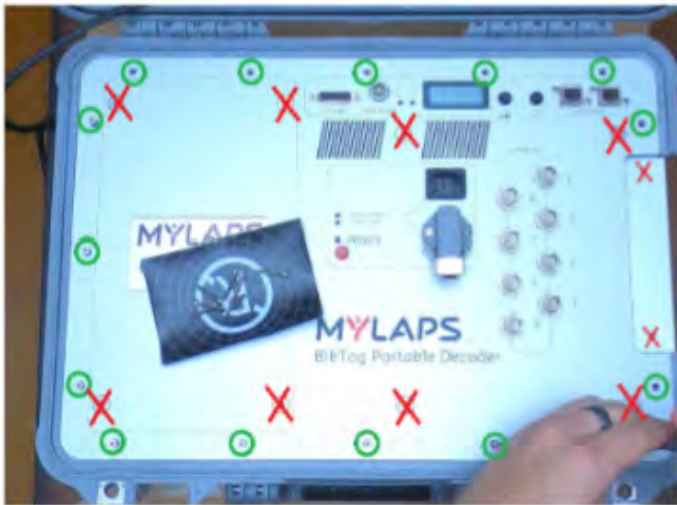
**Beeper test**

**Beeper replacement**

# Beeper test

Open the decoder Only unscrew the green marked screws! You can't unscrew the crossmarked screws because it will loosen up the internal works of the decoder. You'll probably have to send the decoder to MYLAPS to get it fixed if you do this. When unscrewed, flip the faceplate and lay on the faceplate. You can put it on the decoder.

**!Don't unscrew the red marked screws!**



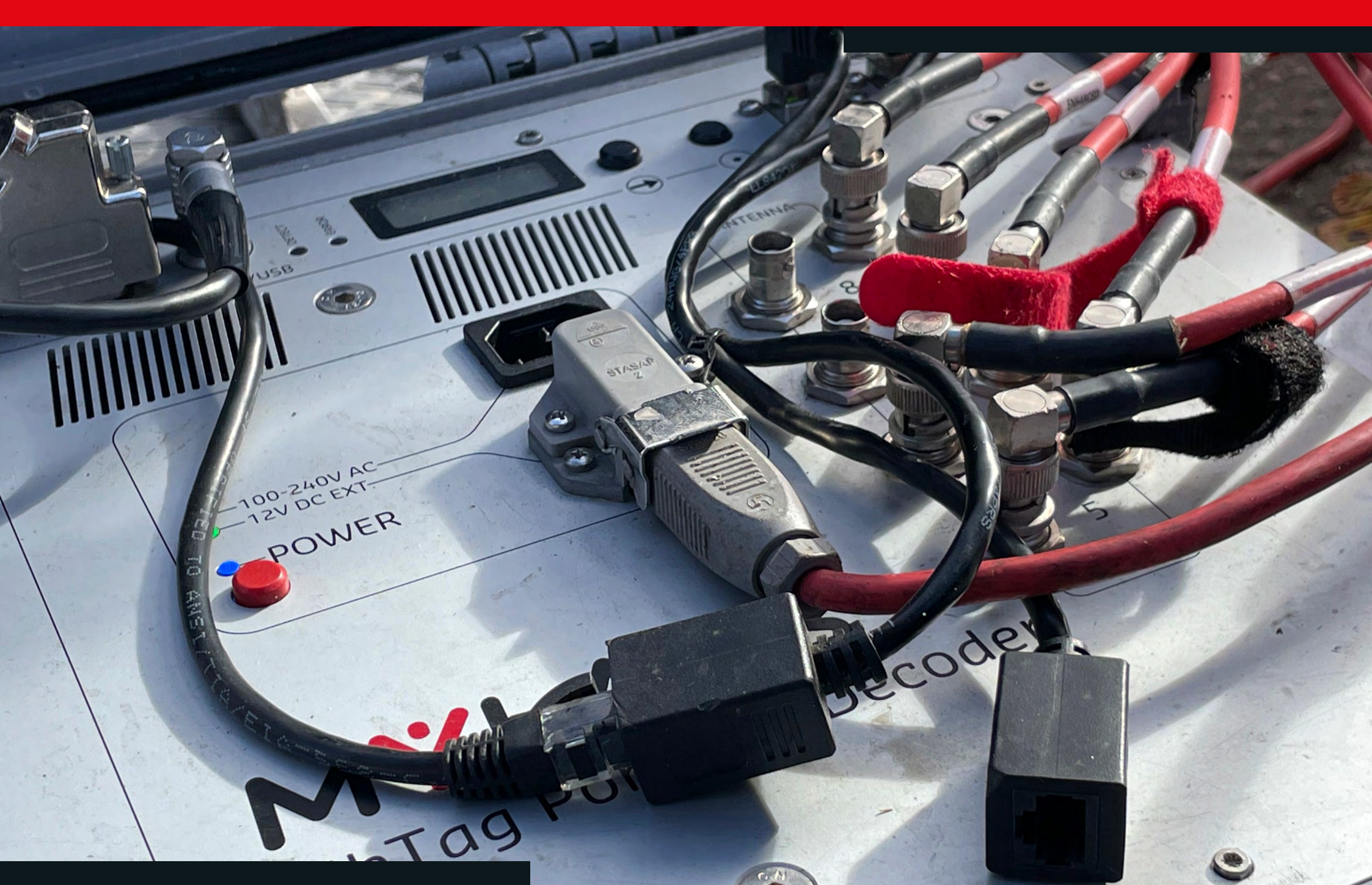
## 2. Check the beeper

Locate the beeper. When tapping the buzzer with a screwdriver you can test it's functioning.



No beep? Then you need to replace the beeper



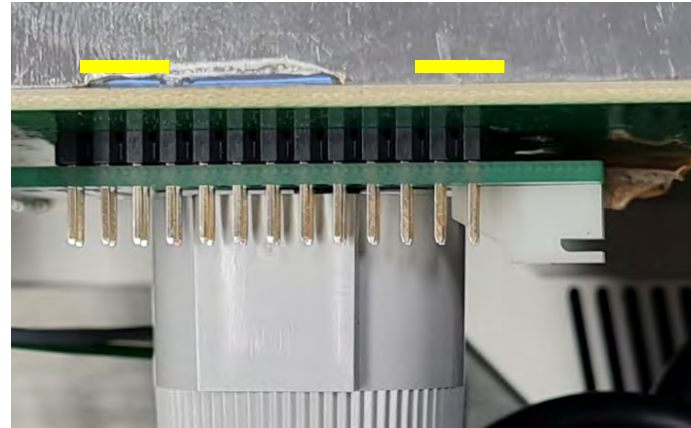
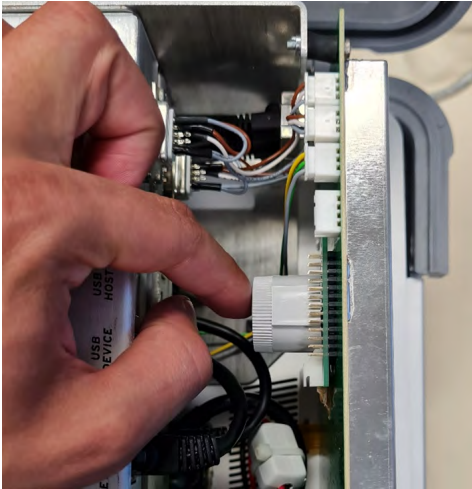




# Replacing the Beeper

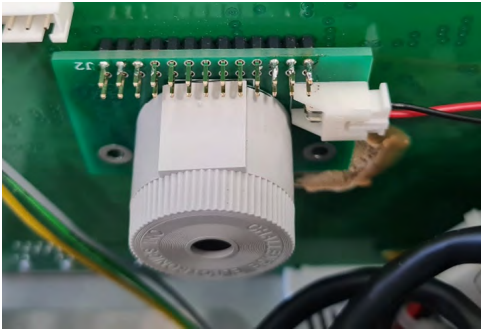
## 1. Locate and Solder

Locate the 26 pins header on the BibTag decoder PCB and put the Buzzer PCB on this, The solder the marked pins using a soldering iron.



## 2. Connect the Beeper

Connect the Buzzer Cable to the Buzzer PCB. Next, connect the other end of the Buzzer Cable to the Decoder PCB. Finally, push the remainder of the Buzzer cable to the bottom (towards the front plate).



### 3. Run the Beeper Test again

Now run the same test to see if it's beeping, by tapping the screwdriver. Sometimes the beeper won't work when you're switching from warm/cold locations, but after climatizing a bit, the beeper will work.







**Want to learn more?**

Looking for more maintenance guides or other information on your hardware/software?

Visit [help.mylaps.com](https://help.mylaps.com) for more guides, videos, and manuals.